

• **ENTRIES.** As many as THREE students from EACH GRADE LEVEL (grades 4 and 5) OR ages 9 and 10 respectively by Sept. 1 of the current school year, if in an ungraded school, may be entered in the Art Memory District Contest from each school. Designated adults representing each school will select contestants to represent the campus at the District Meet based on their abilities and interest in Art, as well as other factors, which are decided upon by each school. Each grade level is judged separately in contest.

• **ADVANCING TO STATE.** A minimum of four students in a grade or age level from at least two different schools must compete at the district meet in order for the top **two** to advance to State. (See page 8 for complete rules for advancing to State.)

• **NATURE OF THE CONTEST.** *The PSIA Art Memory Contest consists of two parts: Part 1:* Contestants learn to recognize the artist and title of 40 pieces of art through the study of the current year's *Art Smart Bulletin*. Every two years, 40 different pieces of art are included in the study. *A new bulletin will be used for the contest during the 2007-2008 school year, and this same bulletin will be used in 2008-2009.* There are selections from the National Gallery of Art (Washington, D.C.) and from several Texas art museums. Color pictures of the art works provide additional study for the contest. Part 1 of the contest will consist of recognition of 15 of the 40 paintings.

**Part 2:** Contestants learn about the artist and the art work through their study of the *Art Smart Bulletin*. Contestants take a 30-item multiple choice and true/false test over Art Elements and Art History information found in this bulletin about each painting.

• **WHAT HAPPENS IN THE CONTEST.** The contest director will announce the time and place that contestants and one adult should report for verification of the scoring of tests. Contestants are then given answer sheets for Part 1 and Part 2, on which they are to write their grade levels and their contestant ID numbers in the spaces provided. The contest director will tell contestants their ID numbers, usually during roll call. (Alternates taking the place of absent registered contestants should be sure to let the contest director know as they enter the room to save time in roll call.)

**Part 1:** The contest director will begin the contest by displaying a picture of one of the paintings from this year's selections for a minimum of 20 seconds and a maximum of 40 seconds. As contestants view the picture, they should begin writing the last name of the artist and the title of the artwork in the spaces provided on the answer sheet. A minimum of 15 seconds and a maximum

of 30 seconds of wait time should be provided after the picture has been presented.

**Part 2:** The contest director will distribute the 30-item objective test to each contestant. **Contestants should place their contestant ID numbers and grade levels in the spaces provided on the cover of the test.** When the start signal is given, contestants will have **15 minutes** to write their CAPITAL LETTER answers in the spaces provided on their answer sheets.

• **SCORING.** Award 5 points for every complete and correct answer: (1) artist's last name; (2) name of the major artwork; (3) objective items for Art Elements; and (4) objective items for Art History. All words, spellings, letter formation, capitalization, and punctuation **MUST** be correct for the student to receive the full 5-point credit. **If the contestant's test answer is correct, but contains errors in spelling, letter formation, capitalization, punctuation, and/or the words "a," "an" OR "the" are missing, the contestant shall be awarded 3 points. NO POINTS WILL BE DEDUCTED FOR INCORRECT OR SKIPPED ITEMS.**

• **VERIFICATION PERIOD.** All scores and rankings are final following this 15-minute period; therefore, it is important that you and/or one adult attend the verification period to make sure your test paper has been scored accurately. No corrections may be made after this time, and all results will be final. (See Rules for Verification Period on page 12 of the *PSIA Academic Handbook*. Ask your coach for a copy of these rules.)

• **MATERIALS.**

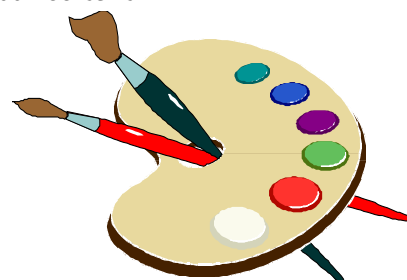
• *Art Smart Bulletin*

• It is recommended that small color prints of the selections be made available to each participant.

• **OPTIONAL COMPANION MATERIAL.**

Slides, small prints (4" x 6"), large prints (11" x 14"), and a recorded audio tour of the selected prints are available from:

TUNE IN  
 P.O. Box 141727  
 Austin, TX 78714-1727  
 1-800-488-6346



## ADDITIONAL INFORMATION FOR COACHES / CONTEST DIRECTORS

• **PREPARATION FOR CONTEST.** Read and follow all instructions provided in the “Information Pertaining to All Contests” section of the *PSIA Academic Handbook*. Observe and practice with students all rules and procedures delineated in the “Instructions to the Contestant” and in the “Checklist for Contest Directors” and the “Checklist for Graders.” Preparation for the Art Memory Contest should include instruction using the *Art Smart Bulletin*, available only through TuneIn. Providing access to the small color pictures is also helpful. (An order form for TuneIn can be found in the member packet sent to all enrolling schools. If further ordering information is needed, please contact TuneIn at 800 488-6346.

Further study of individual paintings may be found at the websites for each museum. Field trips to the museums can be excellent educational enrichment activities to solidify learning about these artworks.

• **PERSONNEL NEEDED FOR CONTEST.**

1. *Contest Director.* May be a knowledgeable coach of contestants in the contest.
2. *Assistant Director.* A knowledgeable coach from a different school other than director’s.
3. *Graders.* Director and assistant director may also serve as graders. To expedite the grading process, provide at least two graders for every 10 papers.

• **ADDITIONAL MATERIALS AND EQUIPMENT NEEDED IF DIRECTING THIS CONTEST.**

1. Arrange to have a set of the 11 x 14 prints, printouts from the internet, slides, or overhead transparencies available for the contest. (Small prints may be used if no others are available.)
2. Any visual device may be used to display pictures.
3. A copy of “The Official List” from the *Art Smart Bulletin*.

• **SCORING (ADDITIONAL INFORMATION).** Graders should each use a different color pen or pencil to mark papers and place their initials at the bottom of the test answer sheet to indicate that they have graded the paper. **Remember to ADD 5 points for every completely correct answer and 3 points for a correct answer that just has spelling, capitalization, or punctuation errors or the omission of articles (a, an, the). A test item that has any other words missing is incorrect and does not receive 3 points.** Bring extra pens and pencils to grading.

If a contestant scores 100% in this contest at the District or State level, Contest Directors should notify the state office by faxing the form found in the index of the *PSIA Academic Handbook*.

## ADDITIONAL INFORMATION FOR COACHES / CONTEST DIRECTORS

• **PREPARATION FOR CONTEST.** Read and follow all instructions provided in the “Information Pertaining to All Contests” section of the *PSIA Academic Handbook*. Observe and practice with students all rules and procedures delineated in the “Instructions to the Contestant” and in the “Checklist for Contest Directors” and the “Checklist for Graders.” Preparation for the Calculator Contest should include practice using a calculator that is familiar to contestants. Calculator tests from previous years of competition (available on PSIA order forms) provide multiple practice problems for students. No specific calculator is recommended; however, the list to the right should give coaches a starting point.

• **PERSONNEL NEEDED FOR CONTEST.**

*Contest Director and Assistant Director* from two different schools, each knowledgeable of contest construction and administration.  
*Graders.* Director and assistant director may also serve as graders. To expedite the grading process, provide at least two math certified graders for every 15 papers.

• **SCORING (SUPPORT INFORMATION).**

+5 for each correct answer; -2 for each incorrect answer, and erased answer or marked-through answer that does not result in a correct answer. REMEMBER, contestants are **NOT** allowed to skip items on this test without a 2-point penalty for each skip. Graders should each use a different color pen or pencil to mark papers and place their initials at the bottom of the test answer sheet to indicate that they have graded the paper.

**CALCULATOR SUGGESTION LIST**

Hewlett Packard:  
# 32S  
# 32SII  
Sharp: # EL531D (Series)  
# Texas Instruments:  
# TI-36 (Series)  
# TI-83 (Series)  
# TI-84 (Series)  
# Radio Shack:  
# EC-4021  
# EC-4031