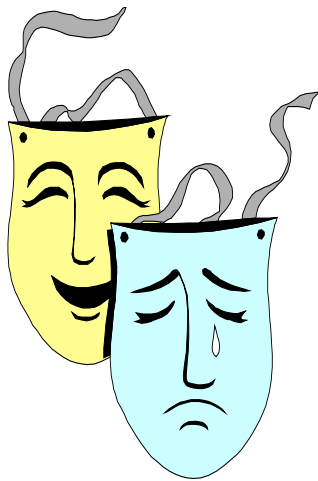


INSTRUCTIONS FOR THE CONTESTANT AND THE COACH

The following guidelines include rules and specifications for contest administration at Area and State levels. Complete instructions for OAP may be found in the 2010-11 edition of the *PSIA Middle School One-Act Play Handbook*.

- **ENTRIES.** Students in grades 6, 7, and 8, OR ages 11, 12, and 13 by Sept. 1 of the current school year, if in an ungraded school, may enter the One-Act Play Contest. Exceptions may be made for student entries up to 2 grade levels below grade 6. As many as **15 actors, plus four crew member** students may be entered in this contest from each school. Schools that consist of any of the three specified grade levels may participate. Acceptance into an AREA competition is on a first-register basis. Schools must first register as a campus by completing the Membership/Participation Form found on the PSIA website www.psiacademics.org. A checkmark should be placed by the One-Act Play offering and fees should be submitted to the PSIA state office, along with participation fees for any other academic events in which the school plans to participate. Then, a schools wishing to participate in One-Act Play MUST complete the Play Title Registration Form found on pages 63-64 of the Academic Handbook (also on line in the Contests section AND in the *PSIA Middle School One-Act Play Handbook* opening pages. Without a play title listed on this form, schools will not be able to complete registration and be placed in the Area meet of their choice on the first-register basis.
- **COMPETITION SCHEDULE/ ADVANCING TO STATE.** Schools will be assisted in locating and forming an area competition. **Area OAP competitions may be held between February 15 and April 14, 2012.** Six plays from across the state will advance to the PSIA OAP State Meet. Ideally, one play will advance from each of six OAP meets held throughout the state. FINAL alignment will be determined following the deadline for receipt of OAP Title Registration Forms — **December 21.** (Check the PSIA website under “Districts and Areas” for updates on area competition dates/places, to be posted periodically: www.psiacademics.org)
- **REGISTRATION DEADLINE.** Inform the Area and State Directors by **November 1** of your school’s intent to participate in OAP competition. Submit original (not photocopied) play scripts



for plays not on the official list found in the handbook, including original plays produced by the campus students and/or teachers, by **December 1.** **If more than one play is submitted for approval, a \$20 reading fee per play is required.** All Play Title registration forms for OAP are due in to the state office on or before **December 21.** (Registration form follows this section in the handbook)

- **PERSONNEL.**

1. **Area Director.** Any person may serve as Area Director of a PSIA OAP Area Meet. Area Director is responsible for booking facilities, collecting fees, and communicating with participating schools. (May be a coach)
 2. **Coach / Director.** Any person may serve as coach / director of a PSIA OAP. Preferrably, the director will be a certified drama instructor.
 2. **Contest Director OR Stage Manager.** Any person that is not a coach of contestants may serve as Contest Director. This person should be knowledgeable in all aspects of the stage: dimensions, lighting, curtains, props, etc. (Further explanation of the Contest Director’s function is found in the OAP handbook.)
 3. **Judge(s).** One or three certified drama teacher(s) or a certified critic judge will be required. (See handbook for detail.) The State OAP Assistant Director or State Director is responsible for hiring a judge or judges and enforcing rules of the contest.
 4. **Time Keepers.** Four persons representing four different participating schools, or four people who represent no school in the competition may serve as time keepers. Two will be stationed backstage - one to time the play, and the other to time the music and sound effects. The other two will sit in the audience and time the play and the music/sound effects.
 5. **Technical Crew.** Doorkeepers, ushers, and box office personnel, as needed. These positions should be divided among participating schools.
- **PLAY SELECTION.** OAP coaches may select a short or long play from the lists provided in the *PSIA OAP Handbook*. **If another play is selected, it must meet these criteria:**
 1. It is an original play written by students/schools under teacher direction.
 3. It must meet the standards in length (with approved cuttings) and content as described in the rules found in the *PSIA OAP Handbook*.
 - **ROYALTIES.** Proof of payment of royalties must be submitted at each level of competition.



• **PLAYTIME LIMIT.** The presentation time of the OAP must not exceed **40 minutes**. Scene changes within the progress of the play are included within that 40-minute time period.

• **TIME LIMITS TO SET AND STRIKE.** **Seven minutes** are allowed to set up the

stage, and seven minutes are allowed to strike the set following the play presentation. These times are separate from play presentation time.

- **TIME LIMITS ON MUSIC ELEMENTS.** **Up to 10 minutes (optionally documented)** shall be allowed for music/sound effect elements.
- **STAGE SET.** Instructions for constructing the basic OAP stage set are found in the appendix of the *PSIA OAP Handbook*. Any pieces of the approved basic stage set may be used in the play production. The host school may provide the stage set, or the pieces needed by an individual school may be brought to contest. **Guidelines for stage sets are printed exactly as they are in the UIL rules. A lengthy explanation has been provided in order to ensure that stage sets will be within required standards. Each school will have no more than a 10' X 10' space in order to store stage pieces behind stage prior to and following their performances. Tables A and B in the PSIA OAP Handbook list approved items, their size limits and other specifications.**
- **THE BASIC SET.** The basic set shall be the one that is available at the contest site. The basic set to be used for all OAP contests may consist of a standard box set of draperies, stage lighting equipment and controls, an intercommunication system, standard stage door and window units and the approved unit set as described in the current *PSIA OAP Handbook*. The contest manager may borrow necessary equipment so long as it is available to all play entries for both rehearsal and performance. A standard light plot of six, nine or more areas should be provided. A light plot specifically and exclusively focused, programmed or controlled for one play, including the host's entry, is a violation of this rule unless approval has been obtained from state office.
- **ADDITIONS TO THE BASIC SET NOT REQUIRING APPROVAL.** The following items shall be used upstage of the house curtain/proscenium unless architectural necessity dictates otherwise.
 - (i) Four portable, single-source lighting

instruments, excluding intelligent/robotic lighting, or two 6' strip lights, or two single source and one strip light may be used. (See *PSIA OAP Handbook* page 11 for specifications.)

(ii) Two 8' x 10' unframed soft goods/cloth type backdrops, scrims, curtains or projection screens, hand-held or suspended on battens between unit set elements and to be used in separate locations.

(See *PSIA OAP Handbook* page 11 for rules/guidelines of use.)

(iii) Capitols on unit set pylons which shall not exceed more than one foot in any direction from the top edge of the pylon and which shall be constructed of lightweight material that shall not damage the pylons.

(iv) Six self-supported trees, each not to exceed 4' wide by 8' high, and six self-supported bushes, each not to exceed 2' wide by 3' high, each of which are lightweight, portable, shiftable, storable and easily transportable.

Two-dimensional cutout trees or bushes may be suspended from unit set elements, but shall not cover more than 50% of the visible surface of each element with the exception of unit set pylons, which may be covered.

(v) Twelve linear feet of non-metallic fence or railing with sections not to exceed 4' high by 8' long by 6" wide, to be self-supported or used in conjunction with unit set elements and soft goods/cloth-type trim elements in (ii) above, but shall not be used to elevate unit set elements. Such sections shall be lightweight, portable, shiftable, storable and easily transportable. Lattice shall not be used.

• **ADDITIONS TO THE BASIC SET REQUIRING APPROVAL.** Special lighting instruments, video and film projections, scrims, drops, step units, platforms, curtains, draperies, trees, bushes, ground-rows, flat scenery or other scenic pieces (except as noted above), require approval. The following items must be postmarked on or before **December 21** and sent to the PSIA State Office: approval requests, the play title, author, exact scenes from or adaptations of the play along with the following, on 8-1/2" x 11" paper:

(i) A scale drawing of the complete ground plan of the proposed set.

(ii) A scale drawing of each proposed addition to the basic set.

(iii) A full description of materials to be used in construction of each proposed addition to the basic set.

(iv) A full description and justification of the intended use of each proposed addition to the basic set.

No consideration will be given to any request for additions to the basic set unless items (i)-(iv) are submitted.

INSTRUCTIONS FOR THE CONTESTANT AND THE COACH *CONTINUED*

(Additions to the basic set do not include stage properties.)

- * The downstage area and areas in front of the curtain may be used by any school in the contest.
- * Audience areas may not be used, UNLESS the stage area is limited to the point that a scene cannot be performed without use of a very small portion of space in front of the audience seating. This adaptation requires approval from the state office.
- **THE DIRECTOR DURING PERFORMANCE.** One director or assistant is permitted in the light booth, but no adult is permitted backstage or offstage areas during the contest performance of their play. Directors are permitted in these areas during the set and strike periods.
- **LIGHTING ASSISTANCE.** One adult assistant in the lighting and sound booth during the play presentation will be permitted.
- **STANDARDS FOR JUDGING.** 60% of the value of the judgment will be based on ACTING (voice, characterization, movement, contrast, ensemble, timing, and motivation). 40% will be based on DIRECTING AND STAGE MECHANICS (set, lighting, sound, make-up, costume, business, tempo, composition and theme.) An elaboration of this criteria may be found in the OAP handbook.
- **AWARDS.** Plays shall be ranked to third place, unless only four plays compete in a contest. All plays not ranking through third place receive fourth place awards. If only 4 plays compete, the first and second place plays will be announced, and the other two receive third place ranking. All students should be recognized for their accomplishments. Individual awards are as follows: Best Actor / Best Actress; up to 10 All-Star Cast Members; and up to 10 Honorable Mention All-Star Cast Members. Present awards from lowest to top ranking play. OAP is a separate PSIA program, and points earned are not added to the district academic tournament points for rankings.
- **FEES.** 1. District / Area / State contest administrators may charge an admission fee each time plays are presented to the public. This fee will help to defray the cost of facilities, personnel, equipment, royalties, etc.

2. The admission fees at the Area or State One-Act Play Meet MAY be \$6.00 for adults and \$4.00 for students.

3. Area directors or One-Act Play Contest Directors OR Managers may assess a fee to each participating school to cover the cost of hiring a judge or providing facilities. Please be aware that this fee could be more than \$250 per school.

4. A **NO-SHOW fee of the proportional divided cost of the play facilities rental and judging fees** shall be collected by the district director, state director, or contest manager from **schools that fail to give notice by January 1** if they have been scheduled to compete and are unable to make it to the tournament.

- **DISQUALIFYING ACTIONS.** Please note that page 2 of the Play Title Registration Form, which follows, must be signed by a school administrator OR the participating head drama coach and be provided to all parents of participants.

- **DRAMA DIRECTOR RULES CHECKLIST.** See page 16 of the *PSIA Academic Handbook* or page v of the *PSIA One-Act Play Handbook for Middle Schools* for this important time-line checklist and rules for drama coaches.



Need additional resources? Go to <http://tetatx.com/> Texas Educational Theatre Association provides helpful information about preparing students for drama competition.

2011-2012 PSIA One-Act Play TITLE Registration Form

Date of Entry: _____

If your PSIA Membership / Participation Form indicates that you may participate in One-Act Play this school year, please complete the following information. Mail to PO Box 2481, Grapevine, TX 76099, or FAX this page **with p. 2** to PSIA (817 421-0929) by **December 21. NO ENTRIES WILL BE ACCEPTED AFTER THIS DATE.**

School: _____ AREA # Requested: _____

One-Act Play Coach/Director: _____

Assistant Director(s) (2 optional): _____

Address: _____

City, State Zip: _____ Email: _____

Phone: _____ Fax: _____

Area Code

Area Code

Play Title: _____ Author: _____

Play Publisher: _____

*If play is NOT on the approved list found in the **One-Act Play Handbook**, send an original script (no photocopy) to the PSIA state office by **December 1**. A committee will determine if the play shall be approved and notify you by Dec. 15.*

CAST: Name up to 15 students to portray characters in your play. Substitutions may be made up until the tournament. Please notify your OAP Contest Manager for your area if cast member changes are made.

CHARACTER / POSITION

STUDENT'S NAME

- | | |
|-----------|-------|
| 1. _____ | _____ |
| 2. _____ | _____ |
| 3. _____ | _____ |
| 4. _____ | _____ |
| 5. _____ | _____ |
| 6. _____ | _____ |
| 7. _____ | _____ |
| 8. _____ | _____ |
| 9. _____ | _____ |
| 10. _____ | _____ |
| 11. _____ | _____ |
| 12. _____ | _____ |
| 13. _____ | _____ |
| 14. _____ | _____ |
| 15. _____ | _____ |

Crew Members (up to 4) Name /Position: _____

ONE-ACT PLAY DISQUALIFICATIONS

PAGE 2 of Official Play Entry

This page, signed by the OAP coach, must be returned to the PSIA State Office
(fax # 817 421-0929) along with the Play Registration Form.

Disqualifying factors for a One-Act Play group are as follows:

- Failure to Meet Deadlines for Submissions:
 - 1) **December 1** – deadline for submitting modified play scripts to the state office that are **not** on the approved lists (All such scripts will be disqualified if received after this date.)
 - 2) **December 21** – deadline for submitting play title registration form to the state office.
 - 3) **January 1** – deadline for dropping out of the competition without full penalty
 - 4) **January 15** – deadline for submitting additions to the approved set to the state office
 - Failure to provide receipt for royalties paid (if applicable)
 - Failure to pay the school’s portion of the meet fee expenses prior to the tournament
 - Going over the 7-minute time allotment for either setting or striking the stage
 - Going over the 40-minute time allotment for the play presentation
 - Prompting: Verbal or body gesture signal from any adult to an actor/actress/crew person while the contest is in progress are not allowed. (This includes signals from the light/sound booth from the one adult who is allowed to assist the crew person in the booth.)
 - Prompting: Written - No script, portion of a script, copy of a script, or any other written reference may be used or viewed on or behind stage by any person, except one crew member, who shall use one official (not photocopied) script only for cues to the light/sound booth.
 - No adult may be behind stage or on stage while the play is in progress. Scene changes during the performance must be managed by students. Adults may assist in the initial setting and final striking of the stage only.
 - Use of profanity and/or use of references to a deity (examples: God, Christ) as expletives is prohibited. Use of words such as “damn” as an expletive must be revised for presentation.
 - Ineligible students – Only students in grades 6-8 may compete. Exceptions for students up to 2 grade levels below grade 6 will be made only on a limited basis.
 - Using more than 15 cast members.
 - Unapproved set – The addition of set pieces that do not meet the specifications delineated in the *PSIA One-Act Play Handbook for Middle Schools*, or the addition of any pieces that are not specified without approval from the state office.
 - Failure to follow the PSIA Code of Conduct. (See page 9 of the *PSIA Academic Handbook* and a reference to the Code on page 15 of the *PSIA Middle School One-Act Play Handbook*)
- All play groups that compete at the area or state meet should be recognized and receive the judge’s critique, even if disqualified. Awards, however, may not be given to individuals in a disqualified group.

The signature below verifies that the information above has been reviewed and shared with contestants and parents participating in the PSIA One-Act Play Contest.

_____ Signature	_____ Title/Position	_____ Date
_____ School	_____ City	_____ Zip Code